

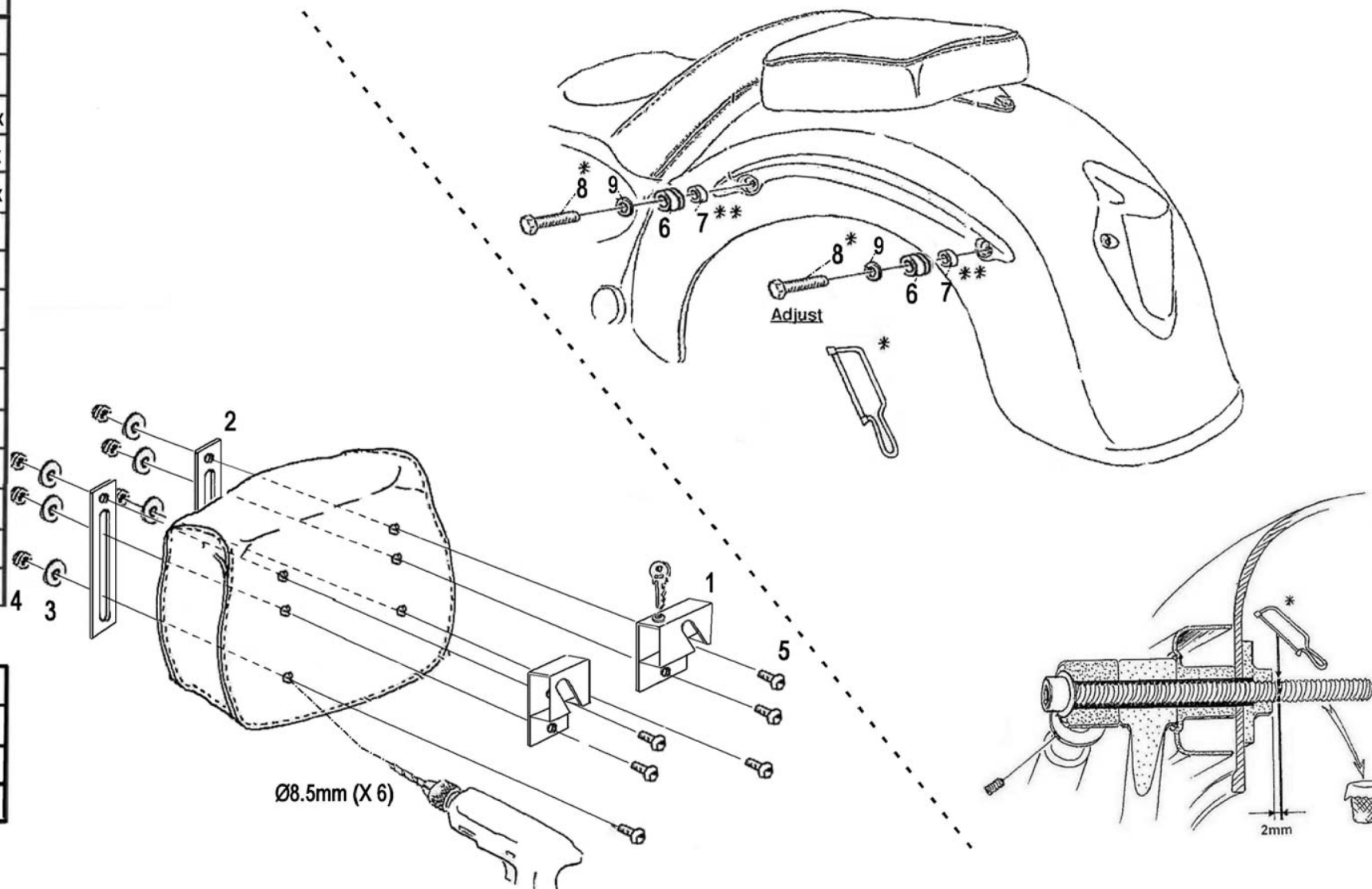
Quick release saddlebag system

Art.no. 66-025

Component

1	Click System	2x
2	Bracket	4x
3	Washer M8	12x
4	Lock nut M8	12x
5	Bolt M8 x 20 mm	12x
6	Guide bush	4x
7	**Spacer Ø14x10mm	4x
	**Spacer Ø14x5mm	4x
8	*Bolt M10 1.25 x 80mm (adjust)	4x
	*Bolt M8 x 80mm (adjust)	4x
	*Bolt M6 x 80mm (adjust)	4x
	*Bolt 3/8" x 2" (adjust)	4x
9	Washer M10 / 3/8"	4x
	Washer M8	4x
	Washer M6	4x

* Remark		
*	Use OEM size for bolt and adjust	4x
**	Check clearance / use when necessary	
Ø	Drill Ø8.5	6x



Please check all fixings and mounting points
before assembly as listed on the mounting instruction sheet.

© Motorrad Burchard GmbH advises installation by a professional mechanic.
We do not accept responsibility for improper installation.

© Motorrad Burchard GmbH
Lemgo – Germany